



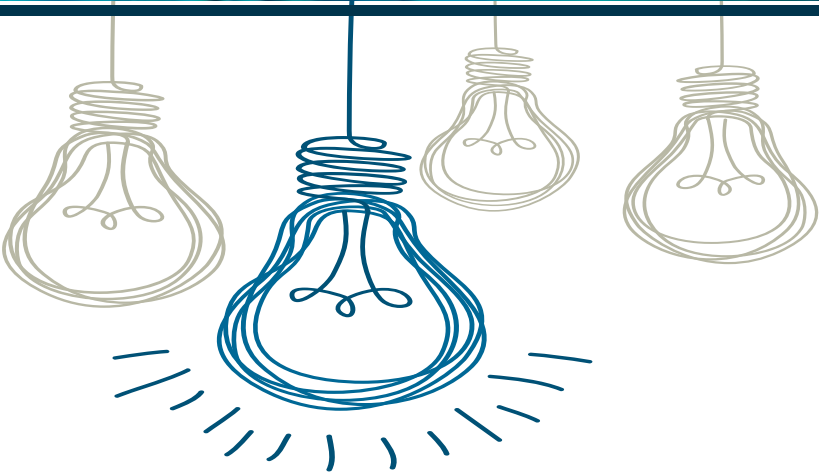
Bringing Confidence & Delivering excellence

ABHI-TECH FAB AND MACHINING PVT. LTD.

TABLE OF CONTENTS



03	●	About Abhi-Tech Group
08	●	Abhi-Tech Group Manufacturing Facilities
11	●	Abhi-Tech Manufacturing Quality
13	●	Abhi-Tech Product Expertise
19	●	Financial Projections – FY 22-23 & Expansion Plans
25	●	Contacts





ABOUT

**ABHI – TECH FAB & MACHINING
PVT LTD**

ABHI-TECH GROUP - WHO WE ARE



An ISO 9001:2015 Certified Company

3+ Manufacturing
Plants

Established in
2009

Abhi-Tech Fab & Machining Pvt Ltd,

(Unit -I), Corporate Office, Machining & Assembly

PAP-W-62/1, Village Warale, Chakan Industrial Area ,
Pune - 410501

(Unit -II), Fabrication Unit

Plot #D-127/1, Chakan Industrial Estate, Phase-II,
Chakan, Pun-410501

Arunuj Castech Pvt Ltd,

Village Warale, Chakan Industrial Area , Pune -
410501

Abhi-Tech Group, offers the solutions for the most complex and intricate parts manufacturing in below segments in almost all industries

- **Heavy & Medium Fabrication**
- **GDC Casting**
- **CNC Precision** Machined Components
- **Mechanical assemblies**

The Company uses state-of-art latest CNC Technologies with **VMC up to 12 meter , 2 Meter CMM, Capable Fabrication Team** to exceed the customer most critical challenges.

We are a decade old company, build customer confidence with commitment towards Quality & Delivery at the most-efficient means





OUR LEADER

Abhimanyu Amle,

Managing Director Of Abhi-Tech Fab & Machining Private Limited, Is A First-Generation Entrepreneur. Under His Leadership And Visionary Thoughts, Abhi-Tech Has Grown Many Folds From Limited Resources To Multiple Companies.

Currently, He Is Managing Director Of Abhi-Tech Fab & Machining Private Limited (Unit I & Unit II), Arunuj Cast Tech Private Limited.

ABHIMANYU AMLE

Managing Director

OUR VISION

To become a **global preferred partner** for the sustainable manufacturing solutions in all sector.



Superior Quality



Competitive Rates

On-Time
Delivery



On-Time, Every Time

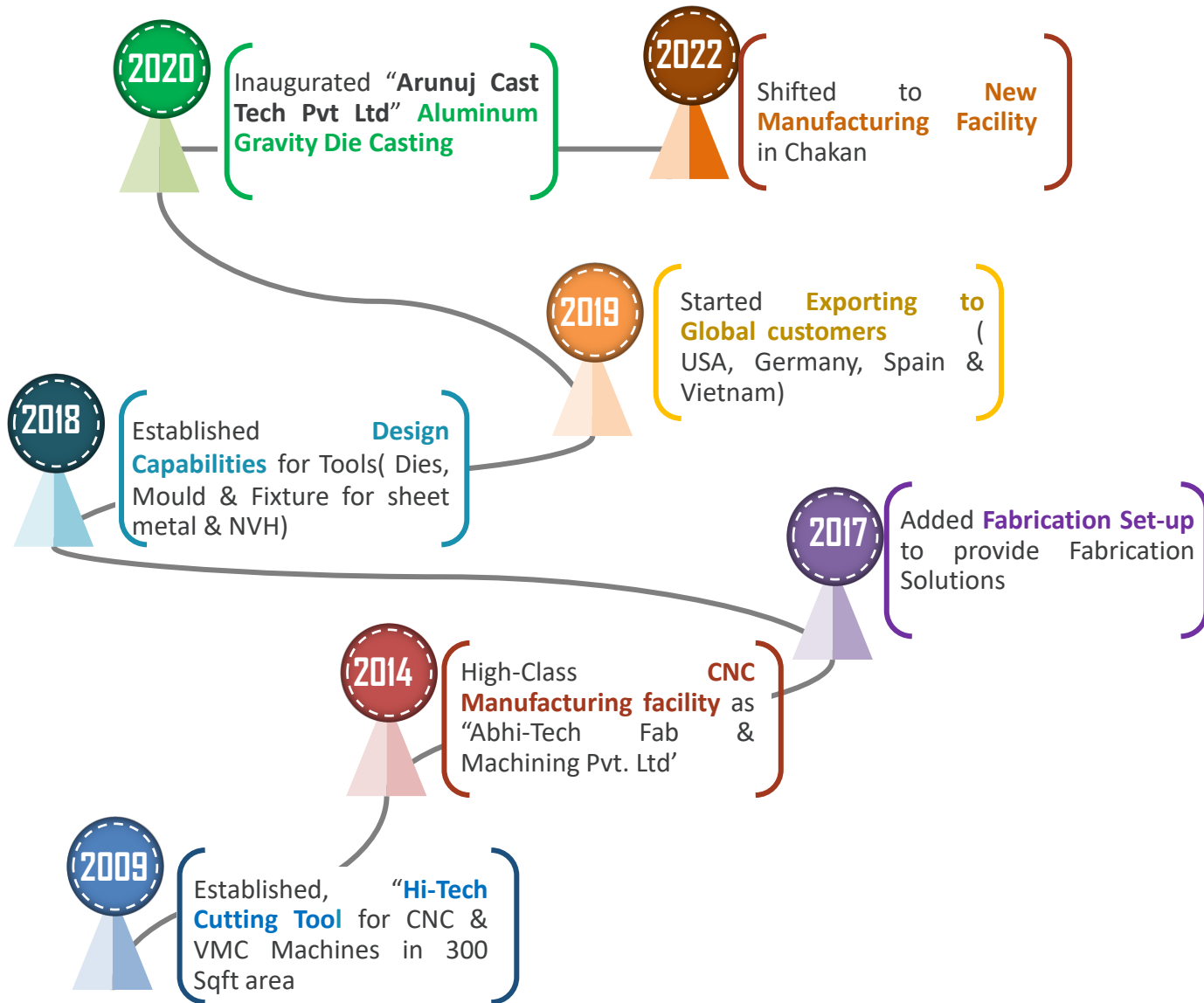


OUR MISSION

To provide **sustainable and cost effective manufacturing solutions** to meet customer's requirements with excellent quality and on-time delivery.



ABHI-TECH>BRIEF HISTORY



OUR VALUED CUSTOMERS





ABHITECH

MANUFACTURING FACILITIES

FABRICATION INFRASTRUCTURE



Space

- 10,000+ Sq.ft Area with built-in Office



Material Handling

- EOT crane – 5 Ton
- Manual – 2.5 Ton



Skilled Welders

- Qualified Welders as per ASME Sec. IX
- Experienced Fitters



Quality

- NDT Level II Inspectors



Machineries

Sr #	Machines	Make	Qty	Year
1	CNC Profile Cutting (6 x 2.5 mtr)	Precision CNC Engineering	01 No	2022
2	MIG & MAG Welding Machine (400 amp)	OTC	02 No's	2022
		PANASONIC	02 No's	2019
3	Pug Machine (Upto 80 mm thick)	ADOR	01 No	2022
4	Gas Cutting Torch (Up-to 25 mm thick)	ESAB	01 No	2022



MACHINING & ASSEMBLY INFRASTRUCTURE

Space

- 30,000 +Sq. ft.
- Office Seating Capacity of 60+

Human Resources

- Skilled VMC operators,
- CAD/ CAM Programmers,
- Dedicated. Quality, Project & Prod. team

Facilities

- VMC Machining (1 to 12 meter)
- Mechanical Assemblies

Certification

- ISO 9001:2015

IT Infrastructure

- ERP, Work NC, NX etc.

Material Handling

- 15 & 10 Ton. EOT Crane

VMC Machines

Sr #	Machine Sizes	Types	Make	Year
1	3.2 x 2.2 x 1.3 Meter	CNC Controlled VMC Machines	HartFord	2016
2	2.5 x 1.6 x 1.1 Meter		Hission	2019
3	12 X 4. x 1.8 Meter		Pro-Star	2023
4	*8 X 4. x 2.1 Meter		HartFord	*Expected Aug'23
5	Conventional Machines	Drilling, Milling, Tapping & Grinding	GSP, Jones-Shipman,	2016





ABHITECH

Quality

QUALITY



- ✓ **Fixed Bed CMM**, Size 1.2 x2 x 1 to evaluate precision Machining Critical Requirements
- ✓ **ISO 14001, 45001** Certification planning by July'23
- ✓ **ISO 9001:2015** certified
- ✓ **All Tool Room** measuring equipment's that include Height Gauge, Slip Gauges, Bore Gauges, Micrometers, Vernier and other Plug & thread gauges
- ✓ **Qualified and dedicated team** for the Supplier Quality, Manufacturing Quality and Final Quality
- ✓ **Qualified Suppliers** for all types Surface treatment and heat treatment needs
- ✓ **Qualified Welders** and Qualification of WPS/ PQR. WQR for the specific Project Requirements



ABHITECH

Products Expertise

WHY ABHI-TECH ?

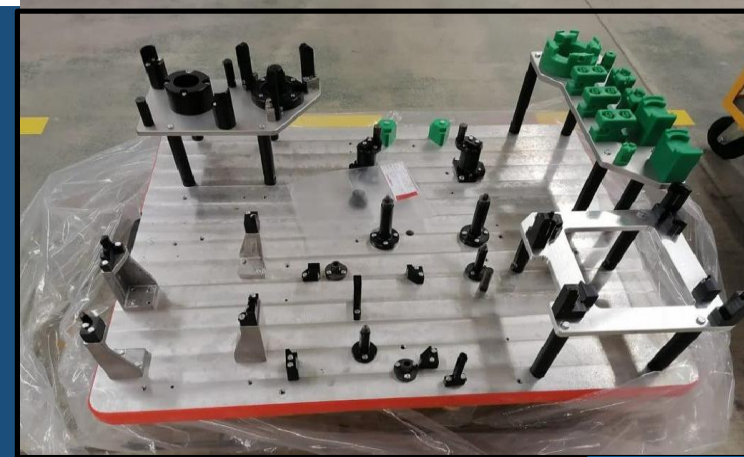
- **10+ Years of Proven experience** in delivering Customers Critical needs of Heavy Fabrication & CNC Precision Machining Solutions in almost all Sectors
- **Customer First Culture**
- We are **Open, Innovative, Challenging** in everything we do
- **Partnering & association** with Engine & Powertrain Automation, Defense, Process Industries, General Industries Clients
- **Delivered 6+ Projects** of Heavy Fabrication & Precision Machined Components to global clients in Germany, Spain, Dubai & UK
- **95+ % → On-time delivery** and continuous improvement
- Planning for **8 Meter VMC & 4 Axis VMC**
- **Expanding Fabrication Facility** 5 times in Chakan to meet the Monthly capacity of 200+ Ton



Pallette Assemblies

Highlights

- ✓ **Infrastructure** : In-house CMM (2 x1.2 x1 M) and Assembly space of about 10,000 Sq.ft
- ✓ **Project Executed** : E-Motor assembly to FORD & Daimler
- ✓ **Competent team** with extensive knowledge in manufacture, assemble & proving the necessitates in the Pallet Assembly
- ✓ Know-how in **manufacturing process** such as Hardening, Cryogenic Shrink-fit, Surface treatment
- ✓ Investing in **4th Axis VMC** Machines to solve key challenges in the manufacturing of critical components
- ✓ Capacity of Manufacturing **10+ Pallets** at daily rate



Proficiency in solving critical Pallet assemblies needs of Engine Assembly, E-Motor Assembly to the international Automation reputed customers

Component Manufacturing

Highlights

- ✓ **Infrastructure** : CNC Vertical Milling Machines with sizes up to 12m
- ✓ **Component Manufactured** : Nimbles, Aluminum Grippers, Base frames, Heavy Structures to both domestic and overseas clients
- ✓ **2.5 meter Surface Plate** for component inspection with **Movable Arm / Laser tracker**
- ✓ Solid background in developing the special tool & fixtures for the complex component development
- ✓ Channel Partners to meet the stringent paint quality requirements



A decade of proven experience in exceeding intricate requirements in the precision fabrication & Machining of component manufacturing in Automation, Defense, Agriculture, Heavy Equipment Industries

SOME EXECUTED PROJECT SNAPS...



Base Frame



Robot Pedestal



2 Meter - Nimble



SOME EXECUTED PROJECT SNAPS...



5 Meter Fabricated Structure



1 Meter Fabricated Structure



4 Meter Fabricated Base



2 Meter Fabricated L-Frame



1 Meter Fabricated Bracket



2 Meter Fabricated Frame



2 Meter Fabricated Structure



5 Meter Fabricated Frame

SOME EXECUTED PROJECT SNAPS...

3.5 Ton. Fixture



Pedestal



Other Welded Structures

NON-FERROUS MATERIALS...

SS PIPES FABRICATION (ROLLING & WELDING)



2 Meter Fabricated Aluminum Gripper



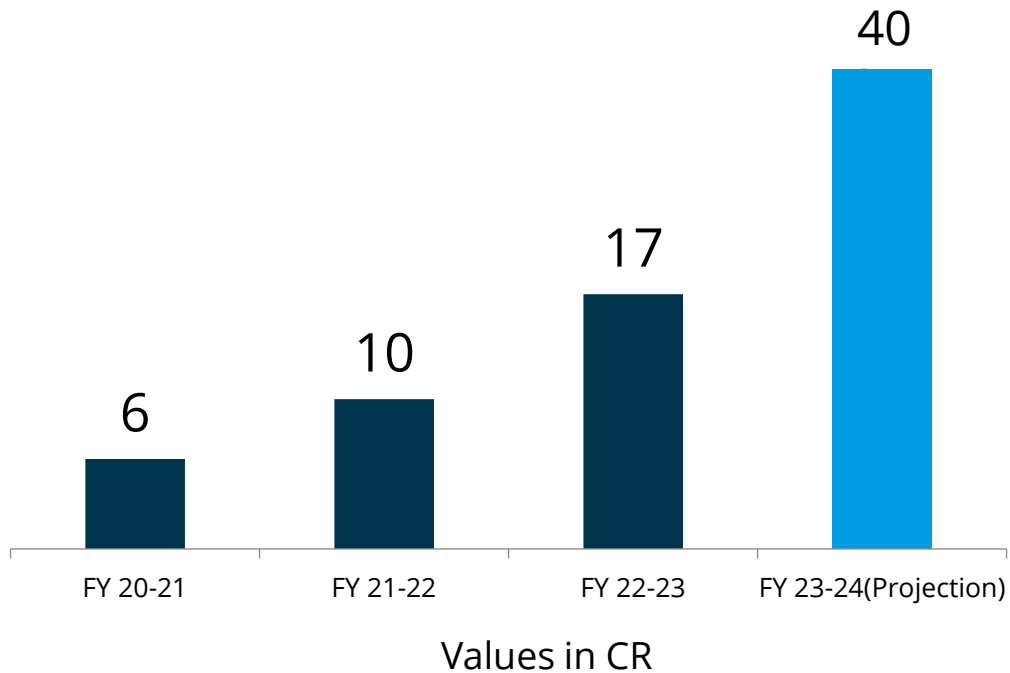


ABHITECH

FINANCIAL PROJECTIONS

FABRICATION EXPANSION PLAN

FINANCIAL ACHIEVEMENTS & PROJECTIONS



Expected Turnover of **₹40 CR.** in FY 23-24(250% increase) with the expansion of **manufacturing facilities, Machineries & Technology** to provide end-to-end solutions to all Precision component with assembly needs in a shortened lead-time

▶ New Aluminum Gravity Casting Unit

Operational in 2021 with Investment [₹1 CR./€ 123k] and offering a capacity of **30 Ton/ Month**

▶ Dedicated Fabrication Unit

- Set-up new fabrication unit in 2022 with the enhancement of space & Capacity (**80 T/ Month**)
- Upgraded the facility with the **introduction of CNC profile cutting, OTC Weld Machines & Team (₹1 CR./ € 123K Investment)** to cope up growing demand
- Process Lead-time reduced and **material utilization optimized** that enabled with one-roof solution of in-house manufacturing arrangements

▶ New Machining & Assembly Unit

- New VMC Machines **8 Meter** expected in Aug'23
- **4th Axis VMC, M1TR** for child parts by Aug'23
- Assembly space of **10k Sq.ft**
- Scaled up team to catch up growing business needs
- **ERP** to handle large volume of project components
- Investment of **₹13 CR. /€ 1.5 Million)**

▶ Certifications

- Planning for **ISO 14001 & ISO 45001** in Apr'23

▶ People

- Adding staff's in
 - ◆ **Project, Assembly, Purchase , Export/ Import**

SECTORS WE SERVE



Automotive & E-Mobility



Defence



Heavy Equipment



General Industries



Process Industries



Railways



OUR CONTACT

STAY IN TOUCH

Corporate Office and Machining & Assembly



PAP-W-62/1, Village Warale,
Chakan Industrial Area , Pune -
410501.



+91 9545147000



abhi@abhitechgroup.com



support@abhitechgroup.com
abhitechgroup.com

FABRICATION FACTORY



Plot #D-127/1, Chakan Industrial
Estate, Phase-II, Chakan, Pun-
410501



+91 9545147000



abhi@abhitechgroup.com



Support@abhitechgroup.com
abhitechgroup.com

ALUMINIUM CASTING FACTORY



Village Warale, Chakan
Industrial Area , Pune - 410501



+91 9545147000



abhi@abhitechgroup.com



Support@abhitechgroup.com
abhitechgroup.com



THANK YOU

